

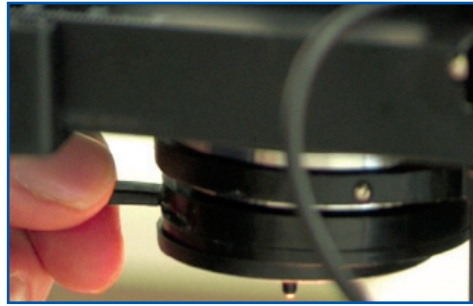
Basic Laboratory Techniques for DIY AI Operators

Why? to help you produce good quality AI and overcome common problems when using the microscope and assessing semen quality

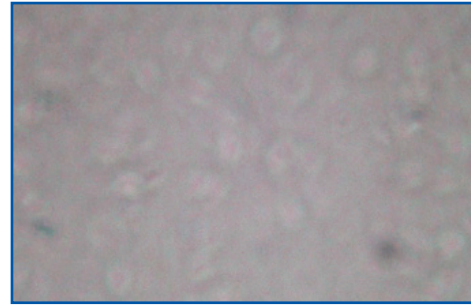
Checklist – Microscope



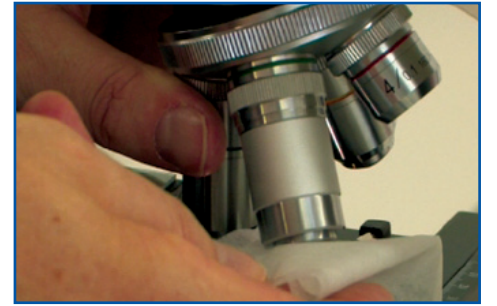
Too light



Adjust diaphragm



Poor focus



Clean lens

Checklist – Raw and Diluted Semen

Use a x10 or x20 lens plus coverslip



less than 20% agglutination
Pre-dilution – check
motility is more
than 70%



less than 20% agglutination
Post-dilution – check
motility is more
than 60%

Checklist – Morphology or Abnormal Sperm

Use a x40 lens plus coverslip



Proximal Droplets

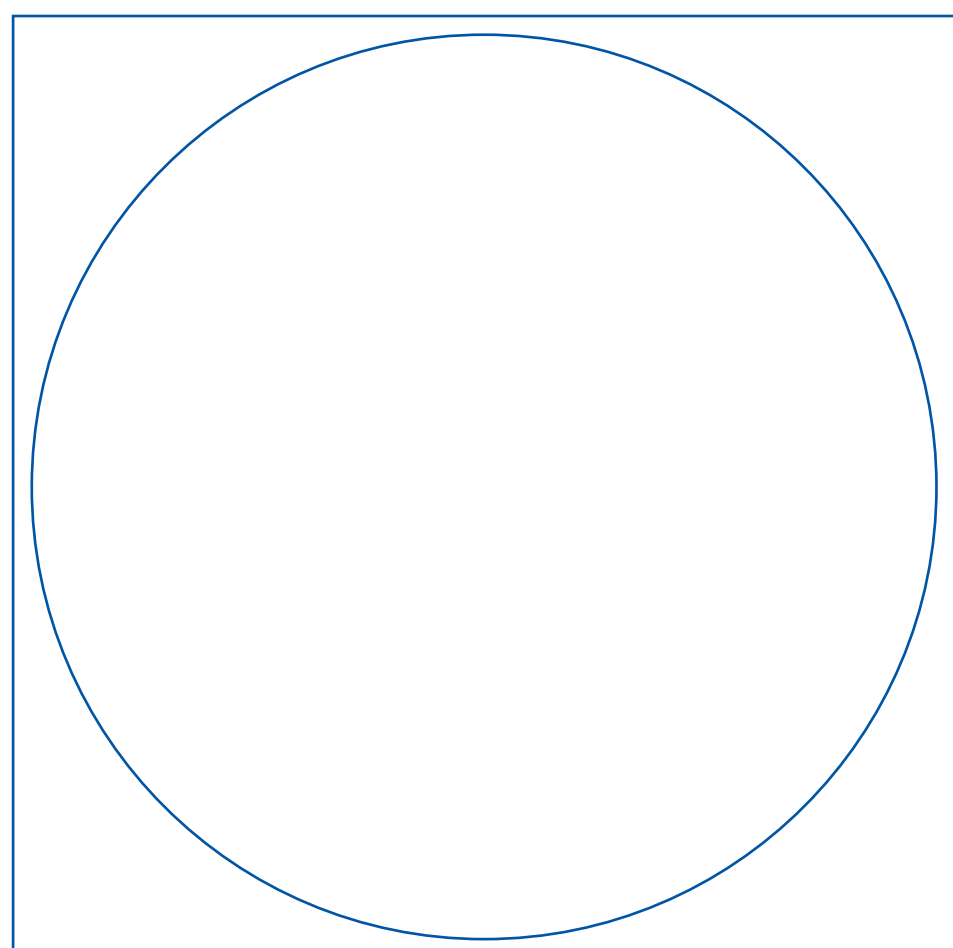


Distal Droplets



Bent Tails

Common abnormalities normally found in semen



Acceptable level is up to 30% abnormal sperm
that is no more than 1 in 3 abnormal sperm

Protocol for reactivating stored semen:

- 1 Put 3-5ml of semen into a small container
- 2 Warm to 37°C
- 3 Gently agitate the container 2-3 times while the semen is warming
- 4 Start assessing sperm motility 5 minutes after the start of warming, and continue checking every 5 minutes until satisfactory motility has been achieved